

# Freight Weight ABC

Price of freight is based on Freight Weight and distance

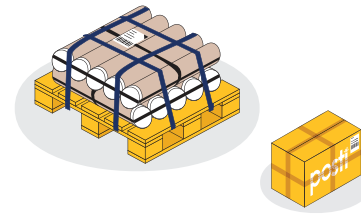
Groupage shipment's (<2500 kg) Freight Weight (rkg) is based on

Cubic Weight	1 m <sup>3</sup> =	333 rkg
Ldm Weight	1 ldm =	1850 rkg
Actual Weight	1 kg =	1 rkg

**A**

## Cubic meters (Colli's volume), when

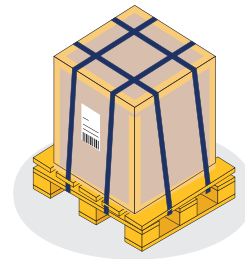
- colli's height is max. 1,3 meters
- and length is max. 5 meters
- and top-loading is not prohibited
- and it is loaded onto machine-movable pallet
  
- or colli's weight is less than or equal to 35 kg



**B**

## Loading meters (Reserved cargo space), when

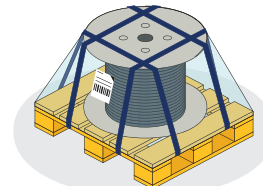
- colli's height is over 1,3 meters
- or length is over 5 meters
- or top-loading is prohibited
- or it is not loaded onto machine-movable pallet



**C**

## Actual weight (Colli's weight), when

- colli's actual weight is larger than cubic meter- or loading meter weight



## Loading meter (ldm)

Length x Width / 2,4 m = ldm

Means the cargo space reserved by the colli from floor to roof

## Loading meters for common pallet types

Half pallet 80x60 cm  
fills 0,2 ldm of cargo space,  
Freight Weight is 370 rkg

EUR-pallet 80x120 cm  
fills 0,4 ldm of cargo space,  
Freight Weight is 740 rkg

FIN-pallet 100x120 cm  
fills 0,5 ldm of cargo space,  
Freight Weight is 925 rkg

Rollcage 68x80 cm  
fills 0,23 ldm of cargo space,  
Freight Weight is 420 rkg

Display-pallet 60x40 cm  
fills 0,1 ldm of cargo space,  
Freight Weight is 185 rkg

Chargeable weight for shipments weighing over 2500 kg will be defined directly by space reserved by the shipment from the cargo space by loading meters.

Colli is a freight transport unit, such as a pallet, a parcel or a cage pallet. Each colli must be separately equipped with a unique logistics unit label. In case the

Freight Weight declared by the shipper is found to be inaccurate, Posti shall have the right to adjust the Freight Weight.